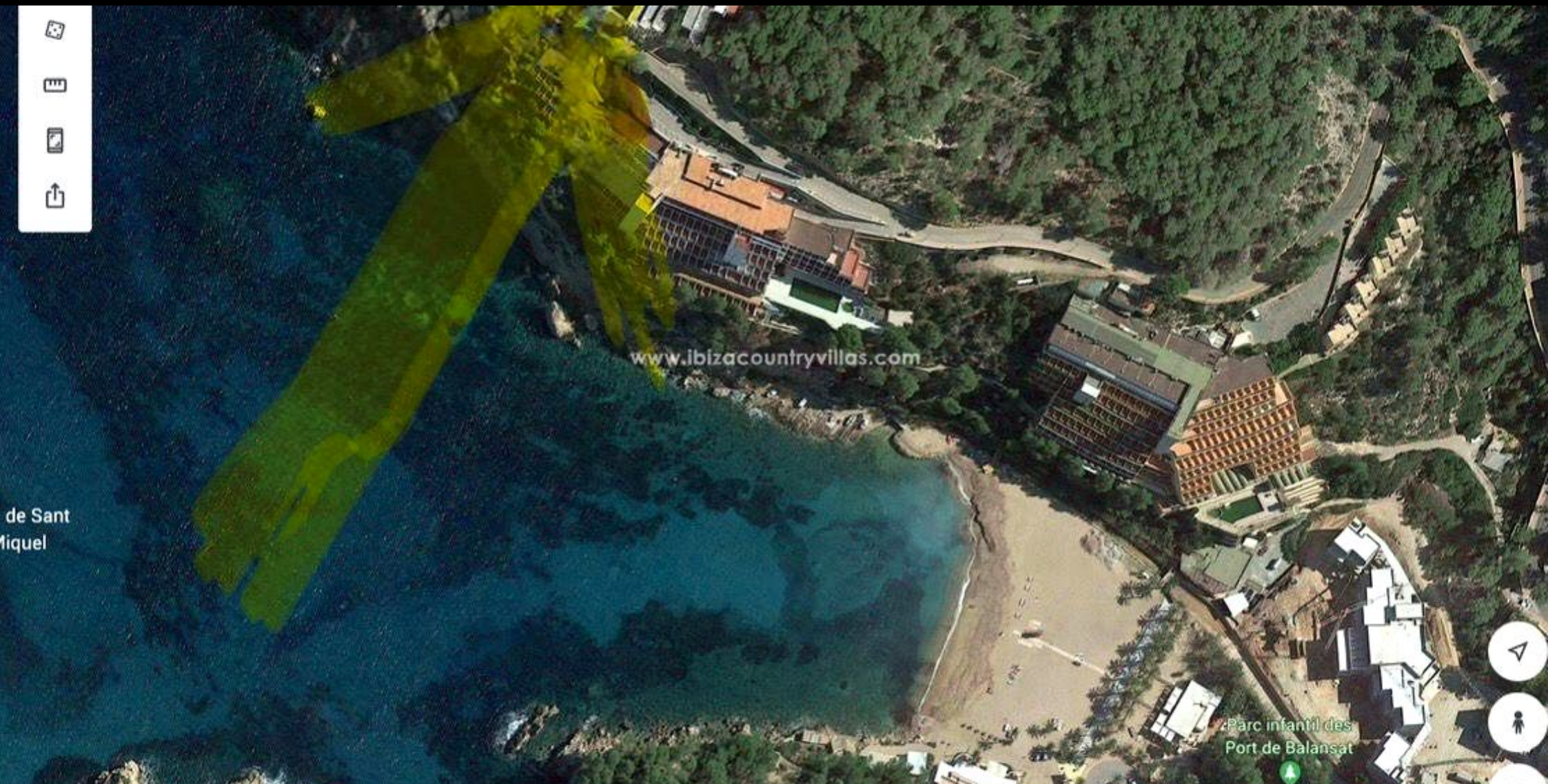


# IBIZA COUNTRY VILLAS



Ref: 40244 - Ibiza  
2.400.000€

Buildable Land with Sea Views





Located in the charming port of Sant Miquel, just a few meters from the beach, this magnificent 2,000 m<sup>2</sup> plot offers spectacular sea views in a privileged setting.

Thanks to its urban classification, it allows the construction of a single-family chalet, providing the opportunity to design an exclusive home with open views of the Mediterranean and the island of Sa Ferradura.



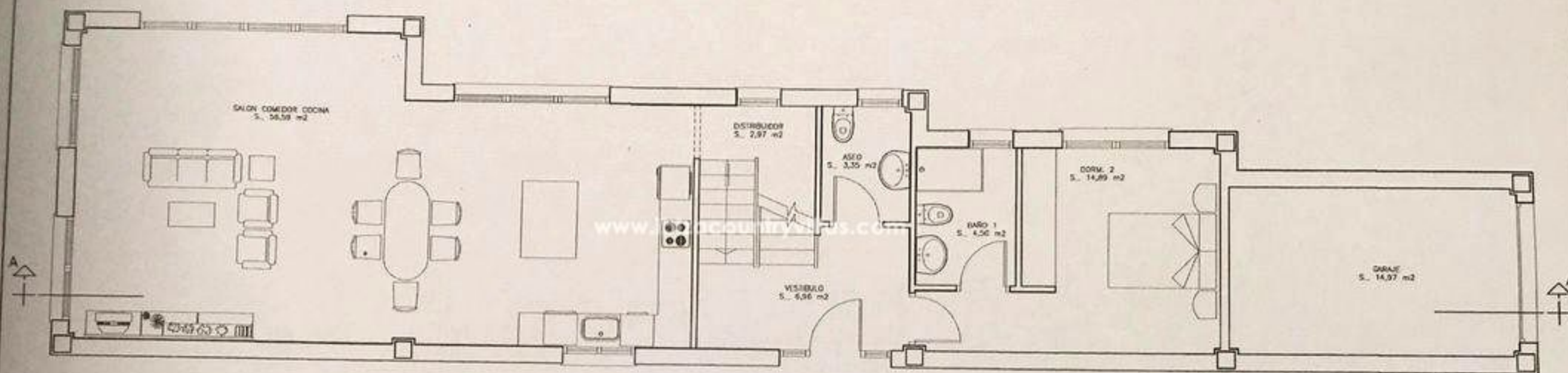
**Cova de Can Marçà**

Cueva natural  
visitable con cafetería

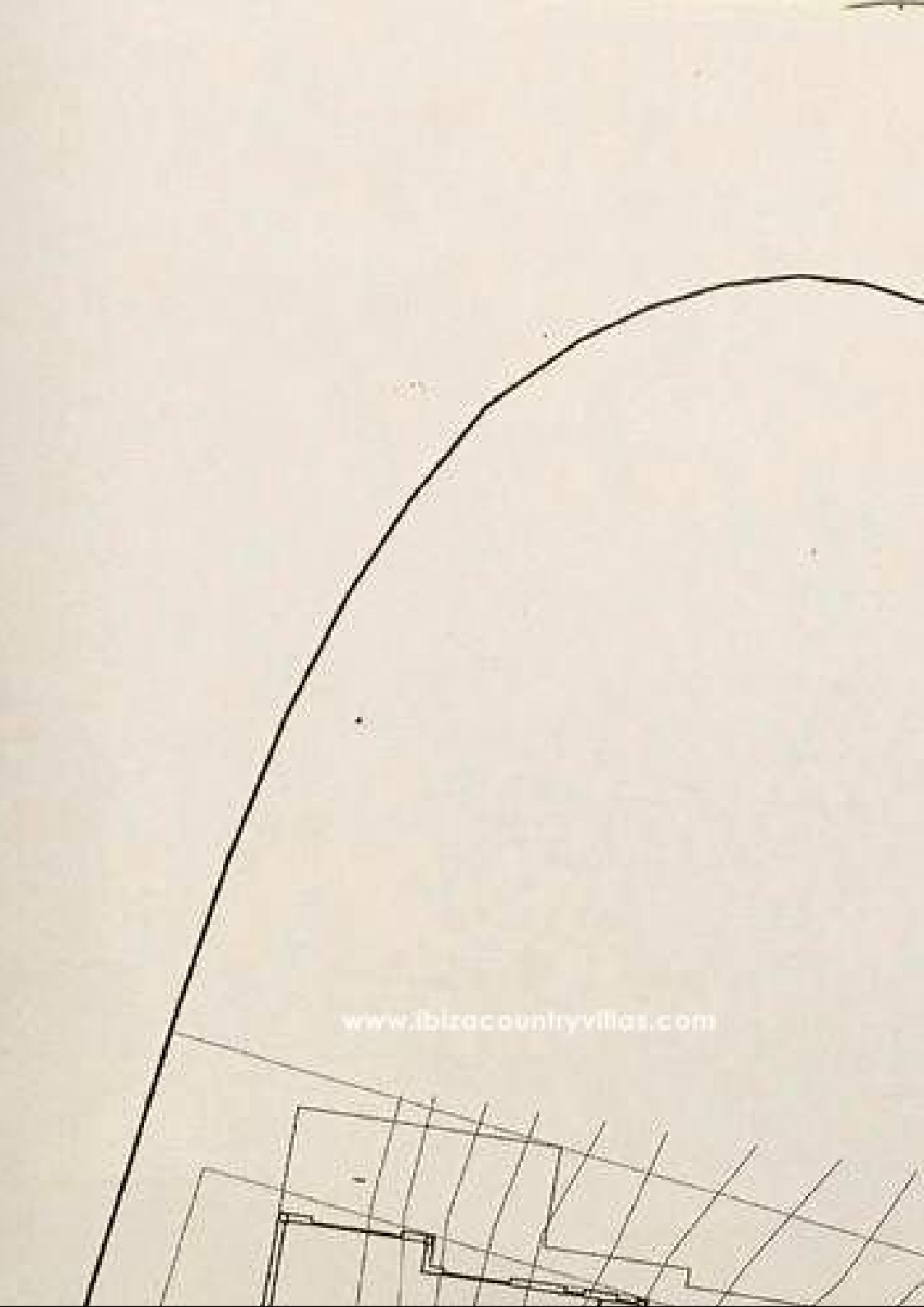
A unique opportunity to create the house of your dreams in one of the most desirable areas in the north of the island.

  
IBIZA COUNTRY  
VILLAS





SUPERFICIE CONSTRUIDA PLANTA BAJA 128,86 m<sup>2</sup>



## FEATURES

---

TYPE: Land

LOCALITY: Ibiza

BEDS: 0

BATHS: 0

PLOT AREA: 2000

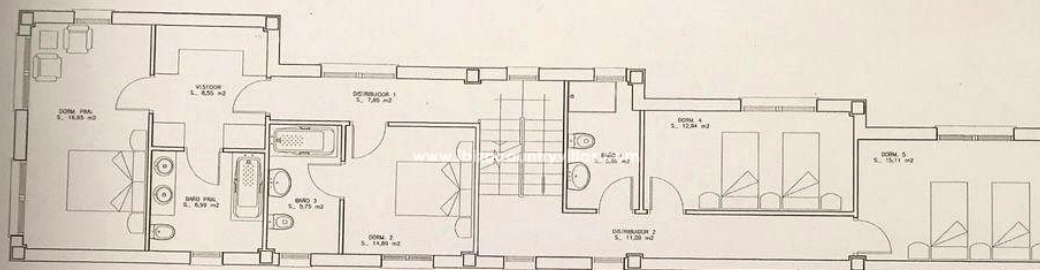
## OTHER FEATURES

---

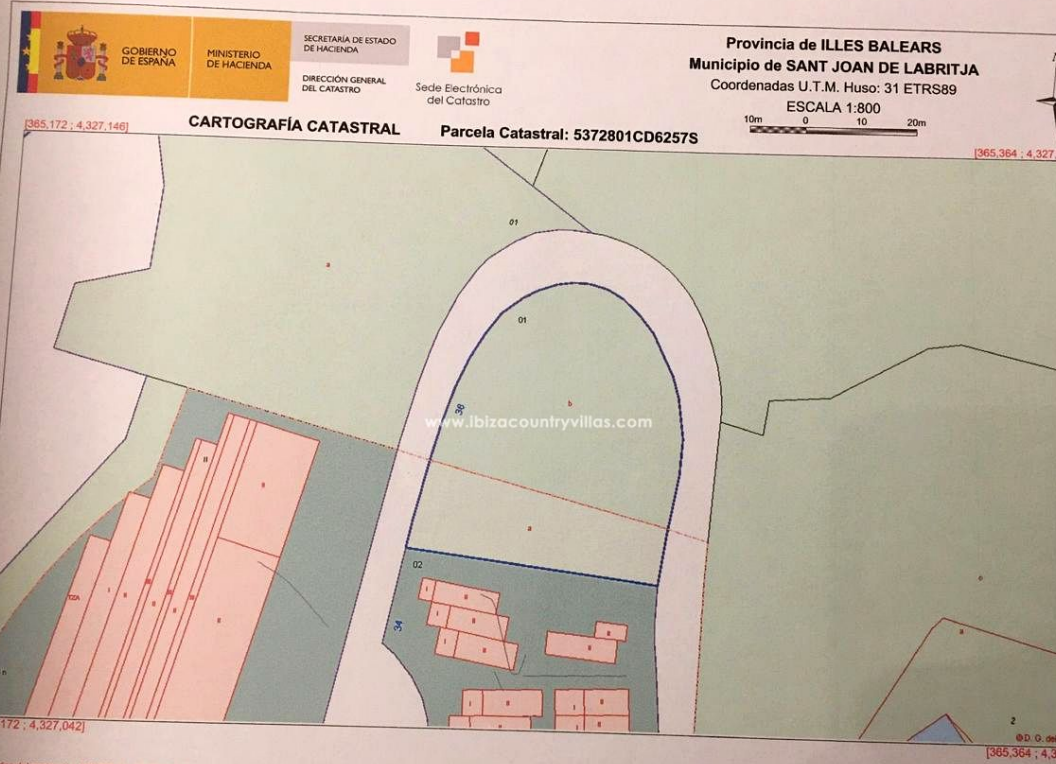
Edificable, Urbano, Vistas Al Mar



NOTAS



SUPERFICIE CONSTRUIDA PLANTA PRIMERA 128,95 m²







Luxury Ibiza Real Estate

---

Pol. Industrial Ca Na Palava, 31 (07819 Jesús)

Tel: +34 971 339 307 / +34 690 823 180

[www.ibizacountryvillas.com](http://www.ibizacountryvillas.com) - [info@ibizacountryvillas.com](mailto:info@ibizacountryvillas.com)