

# IBIZA COUNTRY VILLAS



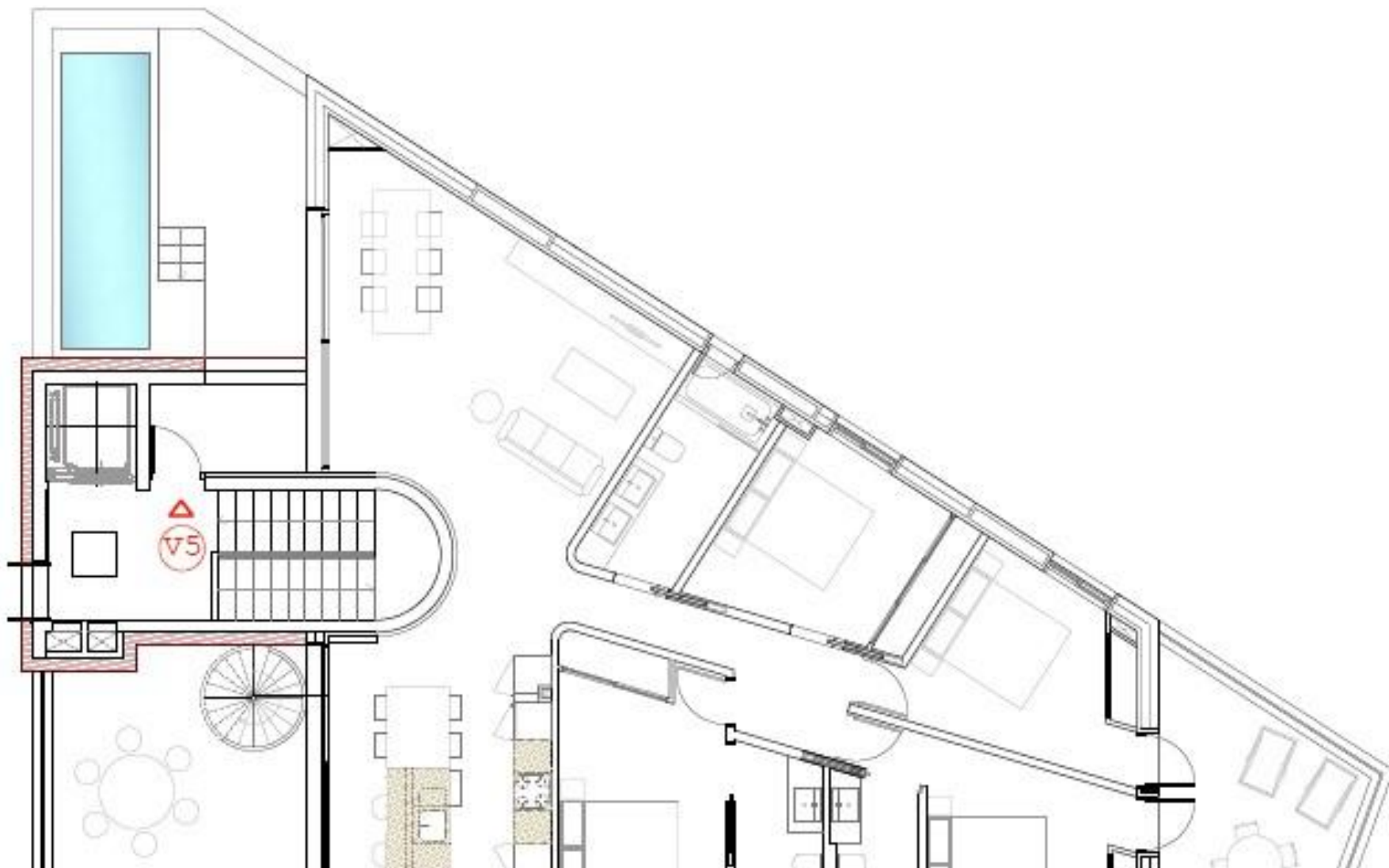
Ref: 21562C-Ático - Nuestra Señora de Jesús  
1.595.000€

Luxurious Penthouse apartment in the center of Jesús town



Ibiza Country Villas presents this Penthouse within a few minutes from Ibiza town, located in the lovely town of J  sus, you'll find this brand new, modern luxury apartment complex.

The building offers a total of five apartments. With wide and open views towards the countryside to the back and views over Ibiza's most luxurious urbanisation "Can Rimbau" in the front, you'll be guaranteed peace and privacy. Each apartment has an allocated parking space in the underground garage (with elevator).



Located in the lively centre of J sus, you'll find restaurants, bars, supermarkets and gym within 3-4 minute walking distance. Talamanca Bay is 5-10 minute walking distance away with restaurants open all year round where you can enjoy lunch or dinner while overlooking the sea.

The interior distribution can be customised according to the purchaser's preferences.



The project will be finished end 2025. Two units have already been sold in this building.



## FEATURES

---

TYPE: Penthouse

LOCALITY: Nuestra Señora de Jesús

BEDS: 5

BATHS: 3

HOUSE AREA: 112

## OTHER FEATURES

---

Aire Acondicionado, Amueblado, Apartamento, Ascensor, Cocina Amueblada, Cocina Equipada, Edificio Con Garaje, Luminoso, Terraza, ático



Luxury Ibiza Real Estate

---

Pol. Industrial Ca Na Palava, 31 (07819 Jesús)

Tel: +34 971 339 307 / +34 690 823 180

[www.ibizacountryvillas.com](http://www.ibizacountryvillas.com) - [info@ibizacountryvillas.com](mailto:info@ibizacountryvillas.com)