

IBIZA COUNTRY VILLAS



Ref: 21346 - 3PN - Santa Eulària des Riu
890.000€

Exclusive new 3-bedroom apartments in Santa Eulalia



Ibiza Country Villas presents this fantastic newly built flat in Santa Eulalia.



The flat is part of a residential project with private terraces, communal areas with playground for children, gym and a roof terrace with an infinity pool and chill out area to contemplate and enjoy the best views to the beach of Santa Eulalia, only 5 minutes walking distance.



The building has two facades of different styles, one facing the sea which is composed of a succession of terraces with Mediterranean vegetation with ecological irrigation system. The other façade is the mountain façade: where ceramic lattices act as a transition element between interior and exterior making natural light invade each of the spectacular flats.

INTERIOR:



The flat has three bedrooms with large built-in wardrobes, two complete bathrooms, and a large open-plan space where they find the living area, dining area and fully furnished kitchen area, equipped with appliances and a practical kitchen island.

OUTSIDE:



The house has a large garden terrace which is accessed from the living-dining room, with a privileged south orientation.

EXTRAS:



The price includes parking space and storage room.


IBIZA COUNTRY
VILLAS

The materials are of excellent quality, always thinking of the durability that they must have for being in a beach area. The bathrooms come complete with a modern and functional design. The kitchens have made-to-measure furniture and Bosch or Balay appliances. The air-conditioning is the best of the present day with hot and cold athermics. Lighting with LED and indirect lighting in some rooms.



All designed to be ready to move in as soon as the flats are delivered.

We also offer the possibility of furnishing the homes so that the client can enjoy their home from the beginning.



THE AREA:

Santa Eulalia has a privileged geographical location within Ibiza, as it allows you to visit every corner of the island in a matter of minutes.



The beaches of Santa Eulalia are only 300 metres away, you can walk along the main avenue and enjoy the pleasant water and sand. The marina, also within walking distance, is a reflection of the local quality of life.

All amenities are accessible from this location: shops, supermarkets and emblematic restaurants that will make your life in Ibiza easier. All this with the main characteristic of Santa Eulalia that distinguishes itself on the island, its tranquillity.



Delivery is scheduled for December 2024.

Prices for the last three-bedroom flats range from to €890,000 (+10% VAT).

Ca n'Espanyol

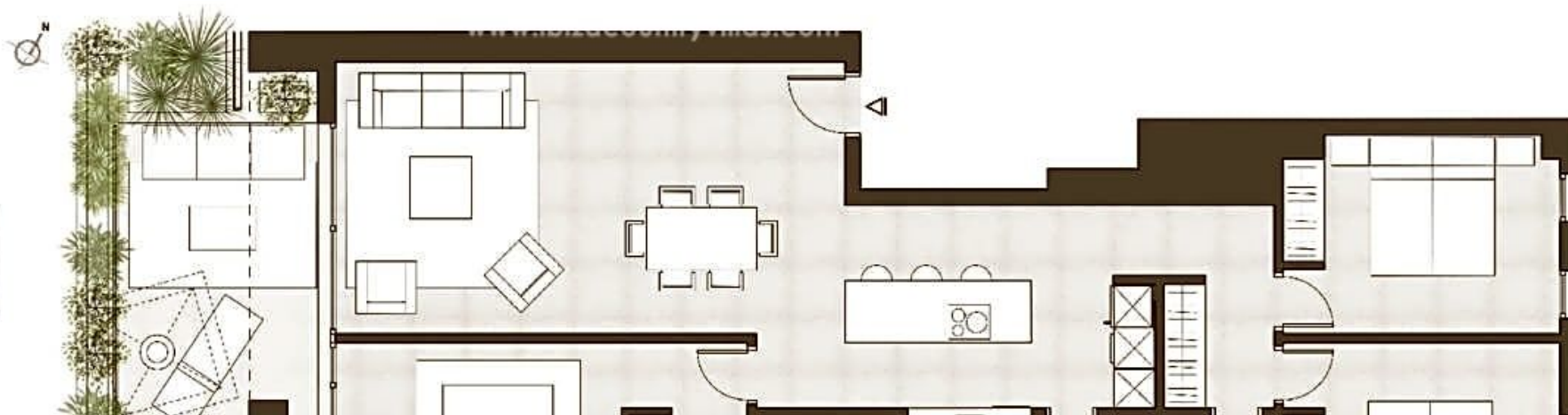
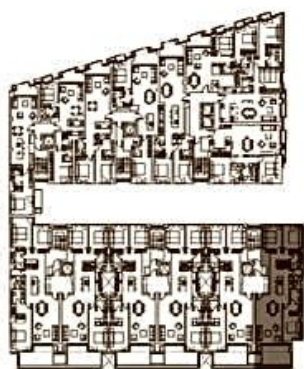
FACHADA SUR:
CALLE SAN JOSÉ

PORTAL 1
3º A
3 HABITACIONES

0 1 2 3m.

| CUADRO SUPERFICIES | m2/útil |
|--------------------------------------|---------|
| SALÓN, COMEDOR, COCINA Y LAVADERO | 46,66 |
| DISTRIBUIDOR | 5,39 |
| DORMITORIO 1 | 12,07 |
| DORMITORIO 2 | 11,25 |
| DORMITORIO 3 | 11,39 |
| VESTIDOR 1 | 2,96 |
| BAÑO 1 | 5,23 |
| BAÑO 2 | 4,07 |
| TERRAZA | 12,82 |
| SUP. ÚTIL TOTAL (INCLUIDO TERRAZA) | 111,84 |
| SUP. CONSTRUIDA PRIVATIVA* | 121,84 |
| SUP. CONS. PRIVATIVA + ZONAS COMUNES | 152,83 |
| TERRAZAS DESCUBIERTAS | 11,69 |

* La superficie de los terrazas computará al 50% cuando su apertura sea igual o superior a 1/3 de su perímetro. En el resto de casos computará al 100%.



The published images are merely illustrative and not contractual.



FEATURES

TYPE: Flat

LOCALITY: Santa Eulària des Riu

BEDS: 3

BATHS: 2

HOUSE AREA: 155

POOL: Yes

OTHER FEATURES

Aire Acondicionado, Armarios Empotrados, Ascensor, Cerca De Playa, Cocina Amueblada, Cocina Equipada, Edificio Con Garaje, Exterior, Gimnasio, Luminoso, Obra Nueva, Orientación Sur, Parking, Piscina Comunitaria, Plaza Garaje Incluida, Terraza, Trastero, Trastero Incluido





Luxury Ibiza Real Estate

Pol. Industrial Ca Na Palava, 31 (07819 Jesús)

Tel: +34 971 339 307 / +34 690 823 180

www.ibizacountryvillas.com - info@ibizacountryvillas.com