



IBIZA COUNTRY  
VILLAS



Ref: 40223 - Can Negret  
3.600.000€

Plot of 19.000m<sup>2</sup> with licence, Sant Llorenç



Ibiza Country Villas presents this rustic plot of land located near Sant Llorenç.

Situated in the heart of the island, in a peaceful countryside setting, the land is flat and fertile, with a total area of 19,128 m<sup>2</sup>. It is being sold with a construction project and building license already granted for a 302 m<sup>2</sup> house, including a swimming pool.



The project is distributed over two floors, although most of the living space is designed on the ground floor. It includes 3 bedrooms, each with its own en-suite bathroom, and preserves a style inspired by traditional Ibizan finca architecture.

Sant Llorenç is a small and tranquil village located in the central-northeastern part of Ibiza, very well connected and close to Santa Gertrudis and Santa Eulalia



## FEATURES

---

TYPE: Country Estate

LOCALITY: Can Negret

BEDS: 0

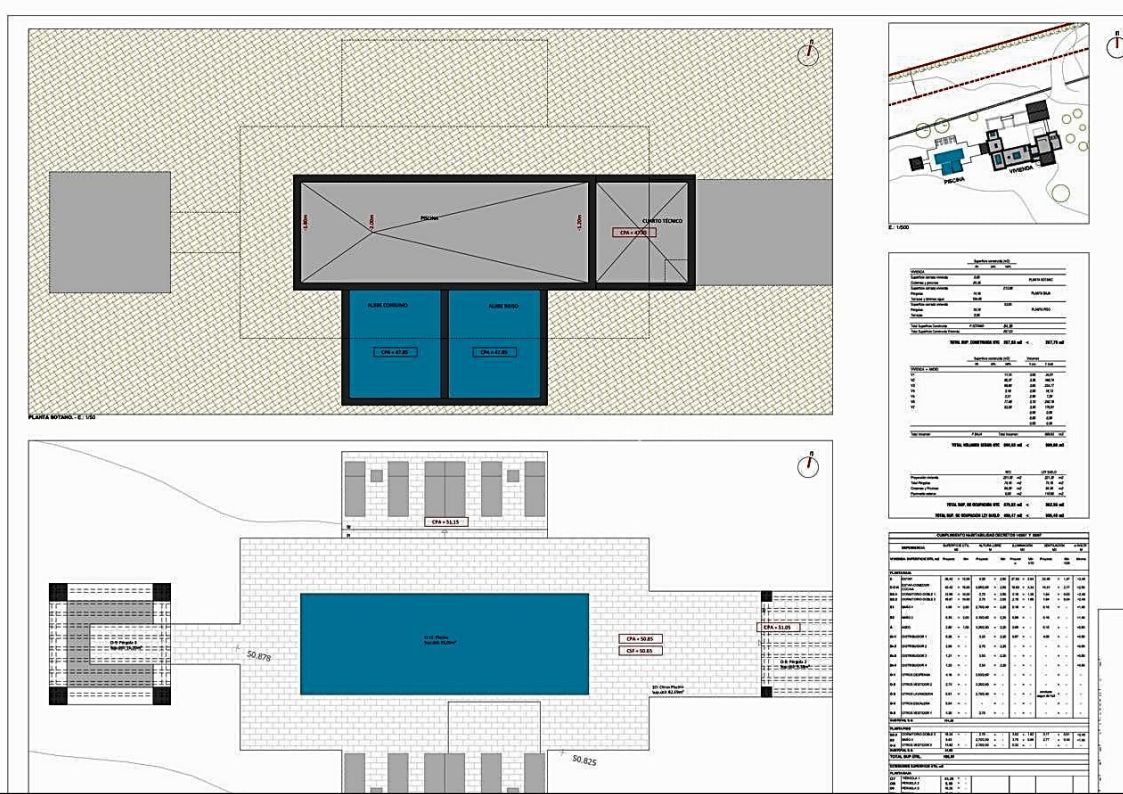
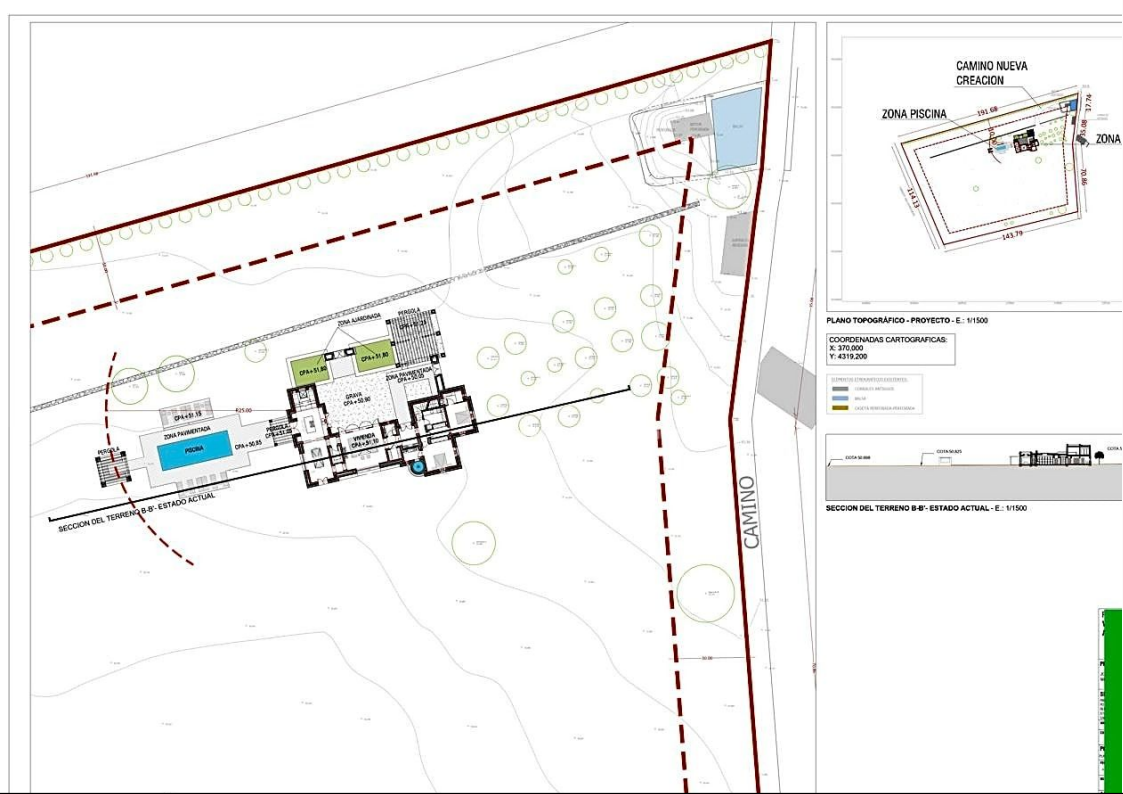
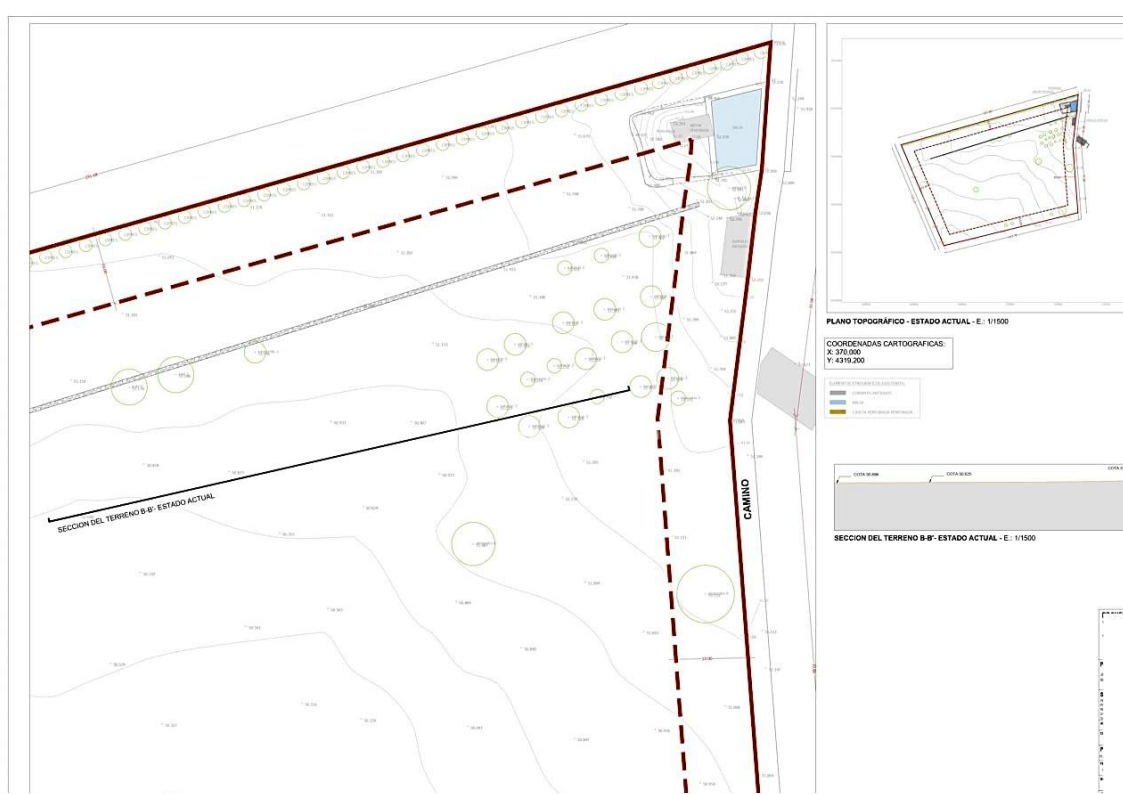
BATHS: 0

PLOT AREA: 19128

## OTHER FEATURES

---

Agua De Perforada, Licencia Para Construir, Finca Rústica, Soleado, Vistas Abiertas Y Despejadas Al Campo





IBIZA COUNTRY  
VILLAS

Luxury Ibiza Real Estate

---

Pol. Industrial Ca Na Palava, 31 (07819 Jesús)

Tel: +34 971 339 307 / +34 690 823 180

[www.ibizacountryvillas.com](http://www.ibizacountryvillas.com) - [info@ibizacountryvillas.com](mailto:info@ibizacountryvillas.com)