

IBIZA COUNTRY VILLAS



Ref: 21562C - Nuestra Señora de Jesús
875.000€

Unique project of a modern apartment complex in the heart of Jesús.



Ibiza Country Villas presents this fantastic project at only a couple of minutes from Ibiza town, located in the charming town of Jesús, you'll find this brand new, modern luxury apartment complex.


IBIZA COUNTRY
VILLAS

In collaboration with project developers Europe Estate Group, we are pleased to offer in exclusivity, a total of five apartments. With wide pasture views in the back and views over Ibiza's most luxurious urbanisation "Can Rimbau" in the front, you'll be guaranteed of peace and privacy. Each apartment has a dedicated parking in the underground garage (with elevator).



Located in the lively centre of Jesús, you'll find restaurants, bars, a supermarket and gym within 3-4 minute walking distance. Talamanca Bay is at 5-10 minute walking distance with restaurants open all year round where you can enjoy lunch or dinner while overlooking a crystal clear turquoise sea.

The interior distribution can be customised according to the purchaser's preferences.



The project will be finished the end of 2025. Two apartments have already been sold.

Groundfloor apartment left / 122,05 m2



Groundfloor apartment right / 105,30 m2

Firstfloor apartment left / 120,05 m2



Firstfloor apartment right / 104,05 m2

Penthouse / 155 m2



FEATURES

TYPE: Apartment

LOCALITY: Nuestra Señora de Jesús

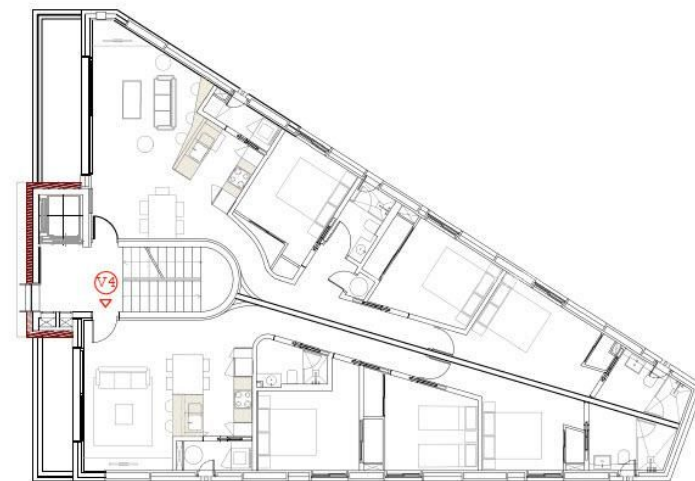
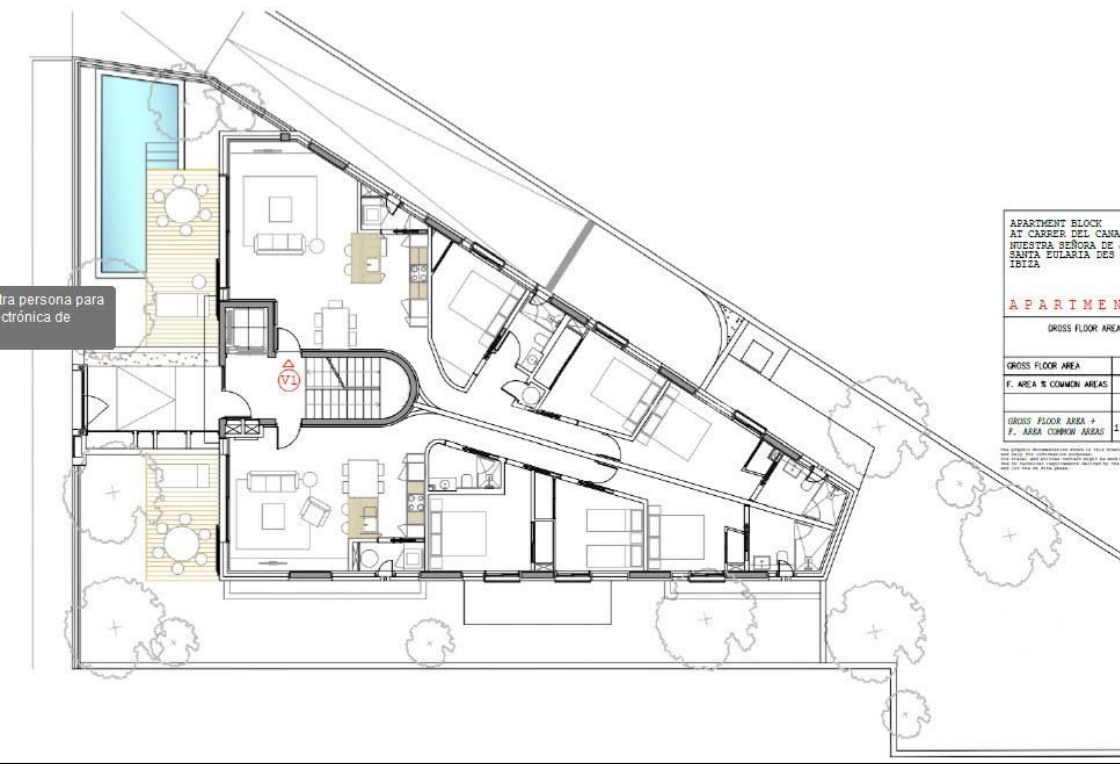
BEDS: 3

BATHS: 2

HOUSE AREA: 104

OTHER FEATURES

Aire Acondicionado, Apartamento, Armarios Empotrados, Cocina Amueblada, Cocina Equipada, Edificio Con Garaje, Exterior, Terraza





Luxury Ibiza Real Estate

Pol. Industrial Ca Na Palava, 31 (07819 Jesús)

Tel: +34 971 339 307 / +34 690 823 180

www.ibizacountryvillas.com - info@ibizacountryvillas.com