

IBIZA COUNTRY
VILLAS



Ref: 21692 - Eivissa
1.395.000€

Spacious apartment with panoramic sea views



Located in one of the most exclusive residential areas of Ibiza, this elegant semi-detached three-bedroom property combines spaciousness, brightness, and stunning panoramic views of the sea and Dalt Vila, offering an excellent opportunity as a primary residence, second home, or investment.

The property has a built area of 129 m², distributed over a spacious living-dining room with abundant natural light, a fully equipped independent kitchen, ideal for those who enjoy cooking with complete comfort, three double bedrooms, and two modern bathrooms.



The true highlight of the home is its spectacular large terrace, partially covered, designed to maximize the Mediterranean lifestyle year-round. The covered area provides a cozy relaxation space, while the uncovered part features a large outdoor dining area, an elegant Balinese bed, and various settings to relax or enjoy unforgettable outdoor evenings with magnificent views of the Mediterranean Sea and Ibiza's skyline.

The property also includes a large parking space and a spacious storage room, adding extra convenience and storage capacity.



Its excellent location allows walking access to Talamanca Beach and the sea. Additionally, the charming village of Jesús, the exclusive Marina Botafoch marina, and Ibiza's historic center are just five minutes by car, offering access to some of the island's best restaurants, boutiques, and entertainment venues.

A magnificent opportunity to acquire a spacious and elegant home in one of Ibiza's most sought-after locations, where comfort, views, and proximity to all amenities are perfectly combined.



FEATURES

TYPE: Flat

LOCALITY: Eivissa

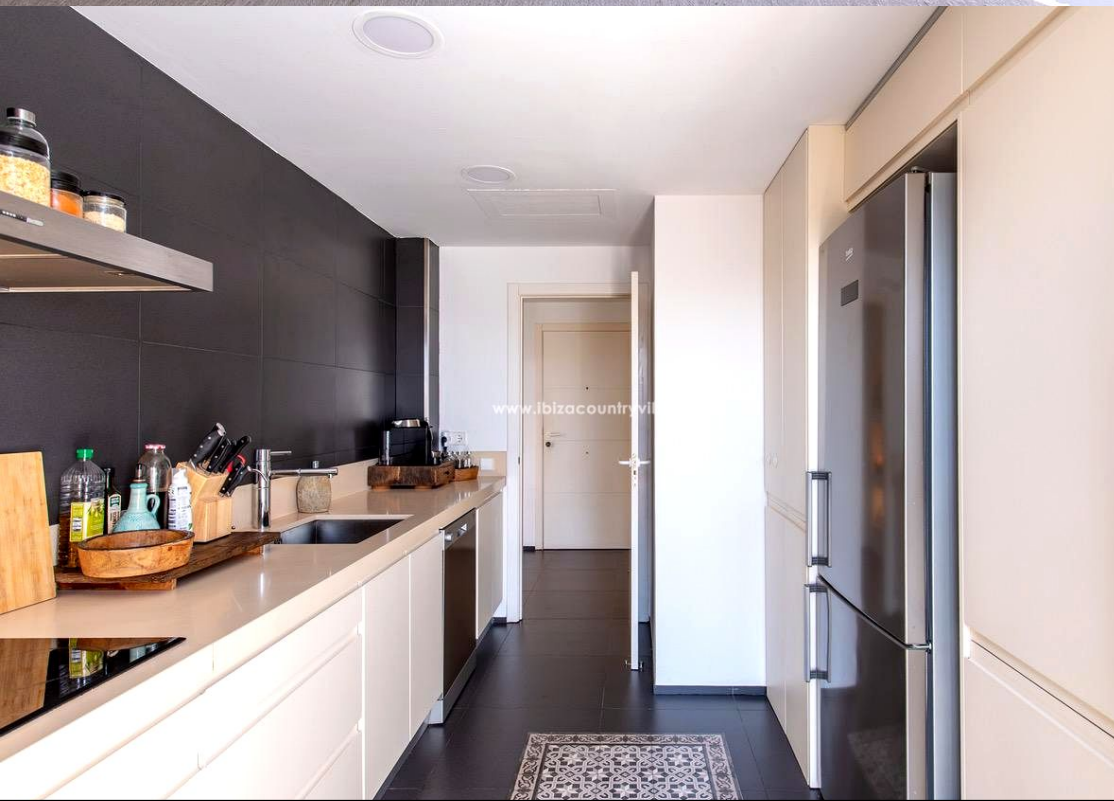
BEDS: 3

BATHS: 2

HOUSE AREA: 129

OTHER FEATURES

Aire Acondicionado, Amueblado, Armarios Empotrados, Ascensor, Cocina Amueblada, Cocina Equipada, Edificio Con Garaje, Luminoso, Parking, Terraza





IBIZA COUNTRY
VILLAS

Luxury Ibiza Real Estate

Pol. Industrial Ca Na Palava, 31 (07819 Jesús)

Tel: +34 971 339 307 / +34 690 823 180

www.ibizacountryvillas.com - info@ibizacountryvillas.com