

IBIZA COUNTRY VILLAS



Ref: 21346 - 2PN - Santa Eulària des Riu
670.000€

Luxurious new 2-bedroom apartments in the centre of Santa Eulalia



Ibiza Country Villas presents this fantastic newly built flat in Santa Eulalia.



The flat is part of a residential project with private terraces, communal areas with playground for children, gym and a roof terrace with an infinity pool and chill out area to contemplate and enjoy the best views to the beach of Santa Eulalia, only 5 minutes walking distance.



The building has two facades of different styles, one facing the sea which is composed of a succession of terraces with Mediterranean vegetation with ecological irrigation system. The other façade is the mountain façade: where ceramic lattices act as a transition element between interior and exterior making natural light invade each of the spectacular flats.

INTERIOR:



The flat has two bedrooms with large built-in wardrobes, two complete bathrooms, and a large open-plan space where the living area, dining area and fully fitted kitchen area, equipped with electrical appliances and a practical kitchen island are located.

OUTSIDE:



The house has a landscaped terrace which is accessed from the living-dining room.

EXTRAS:



Features

Type: Flat

Town: Santa Eulària des Riu

Rooms: 2

Baths: 2

Surface: 103

Pool: 1

Other features

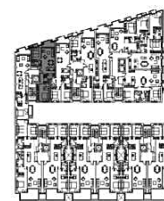
Aire Acondicionado, Armarios Empotrados, Ascensor, Cerca De Playa, Cocina Amueblada, Cocina Equipada, Edificio Con Garaje, Exterior, Gimnasio, Jardín Comunitario, Luminoso, Near The Town Center, Obra Nueva, Piscina Comunitaria, Plaza Garaje Incluida, Terraza, Trastero, Trastero Incluido, Zona Infantil



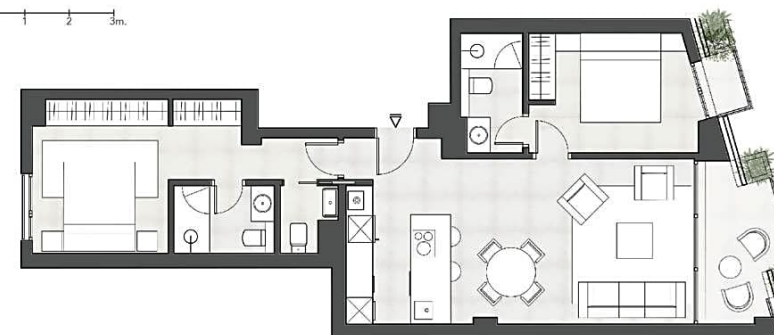
IBIZA COUNTRY VILLAS

FACHADA NORTE:
CALLE CAMINO
DE LA IGLESIA

PORTAL 4
2°B
2 HABITACIONES



0 1 2 3m.



CUADRO SUPERFICIES

SALÓN, COMEDOR, COCINA Y LAVADERO	
DORMITORIO 1	
DORMITORIO 2	
BAÑO 1	
BAÑO 2	
ASEO	
TERRAZA 1	
TERRAZA 2	

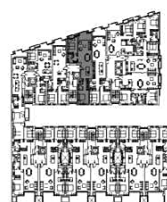
SUP. ÚTIL TOTAL (INCLUIDO TERRAZA)	
SUP. CONSTRUIDA PRIVATIVA*	
SUP. CONS. PRIVATIVA + ZONAS COMUNES	

* La superficie de los terrazas computará al 50% cuando la apertura sea igual o superior a 1/3 de su perímetro. En el resto de casos computará al 100%.

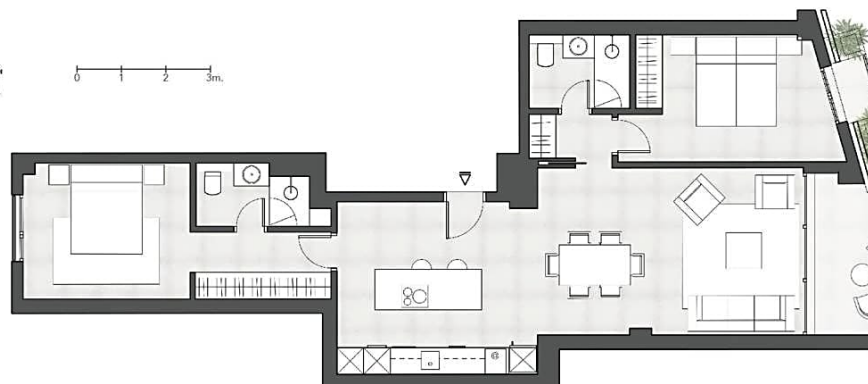
IBIZA COUNTRY VILLAS

FACHADA NORTE:
CALLE CAMINO
DE LA IGLESIA

PORTAL 5
3°B
2 HABITACIONES



0 1 2 3m.



CUADRO SUPERFICIES

SALÓN, COMEDOR, COCINA Y LAVADERO	
DISTRIBUIDOR	
DORMITORIO 1	
DORMITORIO 2	
BAÑO 1	
BAÑO 2	
TERRAZA 1	
TERRAZA 2	

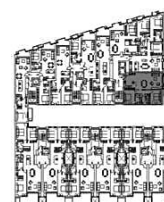
SUP. ÚTIL TOTAL (INCLUIDO TERRAZA)	
SUP. CONSTRUIDA PRIVATIVA*	
SUP. CONS. PRIVATIVA + ZONAS COMUNES	
TERRAZAS DESCUBIERTAS	

* La superficie de los terrazas computará al 50% cuando la apertura sea igual o superior a 1/3 de su perímetro. En el resto de casos computará al 100%.

IBIZA COUNTRY VILLAS

FACHADA NORTE:
CALLE CAMINO
DE LA IGLESIA

PORTAL 6
3°D
2 HABITACIONES



0 1 2 3m.



CUADRO SUPERFICIES

SALÓN, COMEDOR, COCINA Y LAVADERO	
DISTRIBUIDOR	
DORMITORIO 1	
DORMITORIO 2	
BAÑO 1	
BAÑO 2	
TERRAZA	

SUP. ÚTIL TOTAL (INCLUIDO TERRAZA)	
SUP. CONSTRUIDA PRIVATIVA*	
SUP. CONS. PRIVATIVA + ZONAS COMUNES	
TERRAZAS DESCUBIERTAS	

* La superficie de los terrazas computará al 50% cuando la apertura sea igual o superior a 1/3 de su perímetro. En el resto de casos computará al 100%.



Luxury Ibiza Real Estate

Avenida Juan Carlos I s/n Edificio Transat Local 15, 07800 Ibiza

Tel: +34 971 339 307 / +34 971 330 600

Fax: +34 971 398 079

www.ibizacountryvillas.com - info@ibizacountryvillas.com